

JOIN US AT THE  
49TH ANNUAL

MARCH 7-9  
SPOKANE CONVENTION CENTER

# SPOKANE HOME & GARDEN SHOW

FRI: 12-8PM // SAT: 10AM-7PM // SUN: 10AM-5PM

*Meet hundreds of experts in a fun, interactive environment!  
Discover everything new for your home, and learn from the Professionals!*

*(Exhibitor Map on Page 38 & 39)*

## SHOW HIGHLIGHTS

**Pg 34:** Over 14 Seminars

**Pg 17:** Opportunities to Win  
an 8' x 8' Greenhouse!

**Pg 14:** 9-Hole Mini Golf —  
Putt Your Way to Prizes!

**All Day Sunday: Mimosas!**

**BARRELS  
& BREWS**

**FRIDAY DATE NIGHT**

Sponsored by  
the **Exchange**

SAMPLE WINE & BEER WHILE  
SHOPPING FOR YOUR HOME!

Pg. 24



SEE INSIDE TO LEARN MORE OR VISIT [SPOKANEHOMESHOWS.COM](http://SPOKANEHOMESHOWS.COM)

# Welcome to the 49<sup>th</sup> Annual Spokane Home & Garden Show

Are you dreaming of a home makeover? Need some inspiration for your garden oasis? Then get ready, Spokane! The Northwest's premier home and garden event is at the Spokane Convention Center!

**The 49<sup>th</sup> Annual Spokane Home & Garden Show is March 7-9**, bringing together the best contractors, retailers, DIY experts, and industry pros all under one roof! Get ready to be inspired, innovate your space, and discover groundbreaking ideas for your home, both inside and out! From stunning kitchen renovations and lush landscape designs to expert advice and hands-on demonstrations, you'll find everything you need to transform your living space into the home of your dreams.

**Explore gardening ideas, attend expert-led seminars, and shop from top retailers** to bring your outdoor spaces to life.

**Experience the Future of Tiny Living.** Be prepared to be amazed. Tour Tiny Mountain Homes brand-new Brookside 1-bedroom model tiny home. Witness firsthand the craftsmanship, innovation, and stunning design that make Tiny Mountain Houses stand out. This is more than a showcase—it's a chance to re-imagine what home can be. See the difference quality and craftsmanship make—this is tiny living at its finest.

Don't miss out! Mark your calendars for March 7-9 at the Spokane Convention Center. Get your tickets now at [TicketsWestINW.venue.net/events/CCXHOME!](https://TicketsWestINW.venue.net/events/CCXHOME)

*See you there!*



## Clinical Research Makes Our Communities Stronger

By taking part in a clinical trial, you can shape the future of health — especially for conditions that may affect you, your family, and your community. We're seeking participants for **liver disease, obesity, COPD, asthma, and more.**



Contribute to research that could shape the future of human health



Receive compensation for participating (available amounts may differ for each study)



Learn about potential new medicines and access care options in development

**Velocity**  
CLINICAL RESEARCH



Ask about our studies:  
**Call (509) 505-6227, or visit**  
**[VelocityClinicalTrials.com](https://VelocityClinicalTrials.com)**

9921 N Nevada St. Suite 200  
Spokane, WA 99218



[VisionEngage.com](https://VisionEngage.com)

Get matched with studies near you!  
**Get the app! SCAN NOW**



Download on the App Store  
GET IT ON Google Play

Full terms & conditions at  
[VisionEngage.com](https://VisionEngage.com)







open new  
doors at



Cabinetry, doors, decking, sheds, pole buildings, and more at [Ziggys.com](https://www.ziggys.com) and Ziggy's stores



# **CONSTRUCTION & GRANITE LLC**

***A Cut  
Above  
the Rest***

***We are your Granite & Quartz Countertop Experts***

**We Specialize in:**

- Precision Cutting
- Expert Edge Finishing
- Custom Design



**Wide Variety of  
Colors & Patterns  
for your  
One-of-a-Kind  
Dream Kitchen**



**Free In Home Estimate & Professional Advice! Call Today!**

**[StraightlineSpokane.com/request-a-quote/](http://StraightlineSpokane.com/request-a-quote/)or visit us at Booth #245**



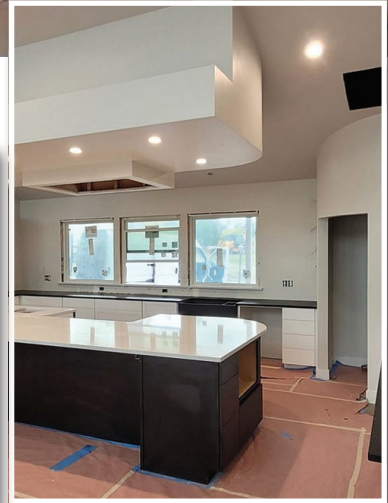


## Kitchen & Bathroom Remodels

**Granite Provides:**

**Elegance  
& Durability**

**Heat & Scratch  
Resistant**



**Cabinets  
Back Splash  
Under-Cabinet  
Illumination!**



**WE DO MORE!**

**SHOP & GARAGE CONSTRUCTION!**

We are more than remodelers, if you need a new shop or garage we can do that too! Years of expertise and experience make us a great choice for expansion needs.

*Call for a quote today!*

**StraightlineSpokane.com | (509) 483-2426**  
4114 E Wellesley Ave, Spokane, WA 99217

## Drought-resistant plants and trees

A beautiful landscape adds considerable aesthetic appeal to a property and an awe-inspiring lawn and garden can greatly improve resale value. In fact, the American Society of Landscape Architects claims landscaping can increase a home's resale value by as much as 20%, a contention that supports the notion that a lush landscape is something buyers want and are willing to pay for.

Maintaining a lush landscape is no small task, but that job is notably easier when homeowners pick the right plants. The right plant for a property depends on where a home is located, but it's worth noting that drought-resistant plants and trees may be especially worthy investments. According to the U.S. Drought Monitor, 54 percent of the contiguous United States experienced moderate or exceptional drought over the first 10 months of 2024.

When planning a landscape renovation, homeowners must take variables such as climate into consideration, particularly if their end goal is a lush, awe-inspiring lawn and garden. With that in mind, the following are some drought-resistant plants and trees eastern Washington homeowners may want to consider adding to their landscapes.

## Trees

The National Arbor Day Foundation notes that drought-tolerant trees are ideal as summer temperatures rise in many parts of the world. Drought-tolerant trees can survive in dry conditions, and they also provide great shade that allows people to enjoy their yards even when temperatures rise. SpokaneScape lists these plants as needing little to no water once established:

- Fern Bush
- Columbia & Douglas Hawthorne
- Rocky Mtn. Juniper
- Bristlecone Pine
- Ponderosa Pine
- Rocky Mtn. Maple
- Curl-leaf & True Mt. Mahogany
- Oceanspray
- Mockorange
- Chokecherry

*continued on page 10*



[www.SpokaneHomeShows.com](http://www.SpokaneHomeShows.com) 

Show Directors: Rhonda Marks & Ciera Briethaupt  
509-939-8017 • NW Premier Promotions, Inc.

Published By **the Exchange**

**Publisher:**  
Barbara Powers

**Admin:**  
M'Kaela Rogers

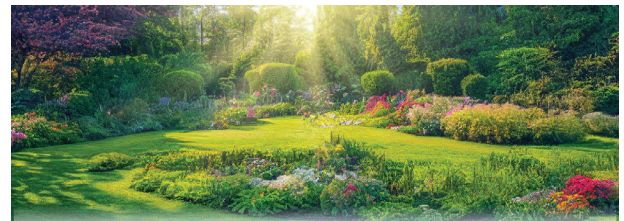
**Production:**  
Patrick McHale  
Shelby Palmer

**Sales:**  
Jan Martin  
Helen Boyd-Schwartz  
Joe Bailey  
Trinity McKee

**Graphic Designers:**  
Jillian Cain  
Emily Ballensky

**Efficient. Effective. Exceptional.**

Call or Text: **509-922-3456**  
**www.PacificNW.Exchange**



Plan to Advertise in **the Exchange**

**SPRING HOME IMPROVEMENT ISSUE**  
on stands Thursday, April 10, Deadline: Monday, April 7

**AND**

**SPRING GARDEN & HOME ISSUE**  
on stands Thursday, May 8, Deadline: Monday, May 5

**FULL PAGE SPECIAL**  
**\$889**  
**OVER \$200 SAVINGS!**

**BUY 4 WEEKS**  
**GET THE 5TH WEEK**  
**FREE\***  
\*at Regular Price

*Special is for Display Ads only*

**509-922-3456 Call or Text**  
**Ads@PacificNW.Exchange • 5111 E Trent Ave., Spokane**



# Landscape Construction & Design & Tree Specialists



Sprinkler Systems  
Retaining Walls  
Paver Patios  
Hardscape Design  
Planting & Mulching  
Emergency/Crane Service  
Tree & Shrub Care  
Stump Grinding  
Tree Removal



**TREE & LANDSCAPE, LLC**



ACCREDITED  
BUSINESS



*Clean, Green & Growing*



*Call Us!*

**509.467.3801**

[www.samscales.net](http://www.samscales.net)

Serving Eastern Washington & Northern Idaho Since 2001 CL # SAMSTTS857BG Licensed, Bonded, and Insured





# Kitchen Refinishing



SCHEDULE A FREE ESTIMATE TO

**509-328-9663**



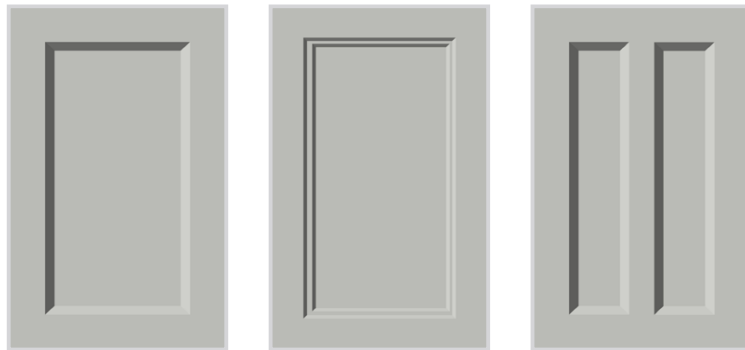
# n Makeover In Days!

nish • Reface • Replace



Give your kitchen a Cabinet Makeover without the mess or cost of a full remodel!

N-Hance can revive your kitchen with new, custom made doors and drawer fronts, giving your cabinets a whole new, updated look.



GET A CABINET MAKEOVER.  
NEW STYLE & NEW FUNCTIONALITY.



SCAN ME



## Plants

Trees add ample aesthetic appeal to a property, but colorful plants also help to create a stunning setting. Homeowners concerned about drought can consider these plants that are listed as needing little to no water once established:

- Yarrow
- Prairie Smoke
- Hyssop
- Yucca
- Noddiong Onion
- Lavendar
- Narrowleaf Milkweed
- Blue Flax



- Garden Catmint
- Seedum
- Christmas Fern
- Kinnickinnik
- Black Eyed Susan
- Artemisia
- Azure Sage
- Spanish Gold Bloom

Homeowners are urged to work with local lawn and garden professionals when picking trees and plants for their properties. Such individuals can provide insight about species that are accustomed to local conditions and capable of thriving in them even when precipitation is low.

Find out detailed information about each plant & more at [Static.spokanecity.org/documents/publicworks/water/water-wise-spokane/spokanes-cape/drought-tolerant-plant-list.pdf](http://Static.spokanecity.org/documents/publicworks/water/water-wise-spokane/spokanes-cape/drought-tolerant-plant-list.pdf).

# DOORSpecialties

INCORPORATED



From  
**"BASIC"**  
to  
**"WOW"!**

We are your  
Residential &  
Commercial  
Door Experts.



**SHOW SPECIAL**  
16'x7' Steel Raised  
Panel Garage Door  
**\$1350 installed**

Visit Our Showroom for Personal Service! DOORSI\*44KL  
7809 E. Trent, Spokane Valley | 509-922-7942



# ADJUSTABLE LOUVERED PATIO COVERS

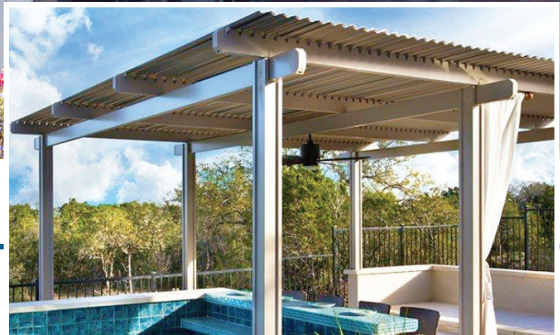
*Controls the Amount of Sun/Shade into Your Home...*



**FREE  
UPGRADE  
\$500  
VALUE** TO MOTORIZED  
FROM MANUAL  
OPERATION

Up to  
**\$500  
OFF** WITH TRADE IN  
OF EXISTING  
ALUMINUM  
AWNING  
**INSTALLATION**

**Ask About  
Insulated  
Patio Covers!**



- Colors Available: White, Taupe or Bronze
- 98% Waterproof when Closed
- Each Installation Custom Designed
- Powder Coated Aluminum for Easy Maintenance

**Alpine**  
PATIO & HOME PRODUCTS

**509-467-0600**  
**AlpinePatioCovers.com**

Contractor #ALPINPC947B3

# ICF Specialties - Frequently Asked Questions

Courtesy of ICF Specialties in Spokane, WA

## What is ICF?

Insulated Concrete Forms (ICFs) are a construction system that combines the strength of concrete with the insulating properties of foam. ICF blocks are typically made from expanded polystyrene (EPS), a type of rigid foam insulation, and are designed to interlock with each other to form walls or foundations for buildings.

Insulated Concrete Forms are a versatile building material that provides both structural integrity and energy efficiency. The combination of polystyrene foam insulation and concrete creates a solid, durable wall system that enhances comfort, reduces energy costs, and improves the overall performance of a building.

## How does ICF save me money?

ICF homes provide significant cost-saving advantages for both builders and homeowners, contributing to both immediate and long-term financial benefits.

### Savings for Builders:

- Faster Construction Process
- Smaller Crew Size
- Reduced Material Requirements
- Decreased Waste

### Savings for Homeowners:

- Lower Energy Bills
- Improved Energy Efficiency
- Better Insulation Performance
- Lower HVAC Costs
- Long Term Durability & Lower Maintenance Costs



## Does working with ICF limit my house design?

One of the key benefits of ICFs is their exceptional flexibility when it comes to design, allowing homeowners and architects to build virtually any structure, regardless of complexity or style. Whether you're looking to create a modern, minimalist home, a traditional design, or a more complex, custom layout with curves and angles, ICFs can accommodate all these needs without compromising on performance or efficiency.

Working with ICFs does not mean compromising on design. In fact, the system's flexibility opens up a world of possibilities, allowing for everything from straightforward, traditional home designs to highly complex, custom features.

## Can ICF protect me against wildfires?

ICF construction provides exceptional protection against wildfires, making it an ideal choice for buildings located in fire-prone areas. The combination of concrete and expanded polystyrene (EPS) foam in ICF walls creates a robust, fire-resistant structure that significantly reduces the risk of fire spreading, both from external sources (such as brush fires) and from within the building.

With a fire-resistance rating of up to four hours, ICF walls can effectively prevent the spread of flames, minimize the risk of structural collapse, and keep the building intact even in the midst of a wildfire. For homeowners in wildfire-prone areas, ICF construction offers a reliable, cost-effective, and durable solution that not only enhances the safety of the building but also provides peace of mind knowing that their home is better protected from one of the most dangerous natural disasters. Whether you're looking for a primary residence, a vacation home, or a safe room, ICFs provide a superior level of fire protection, helping to safeguard both people and property.



- **Gazebo Kits: 8'-16'**
- **Custom Gazebos**
- **Free Estimates!**

**Come See Us in Booth #320! 15% Show Discount!**

**Serving Oregon, Idaho & Washington**  
**1-800-771-4897 | GazeboGuys.com**







# ICF SPECIALTIES INC.

THE ONE STOP SHOP FOR ALL OF YOUR ICF NEEDS

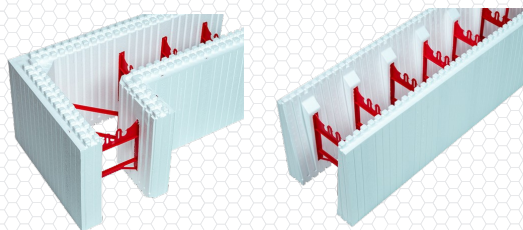
INSULATING CONCRETE FORMS, ACCESSORIES, TECHNICAL SERVICES, TRAINING AND MORE



## ICF PRODUCTS & MUCH MORE

- DESIGN SERVICES
- ICF BLOCKS
- DOOR & WINDOW BUCKING
- FLOOR & ROOF SYSTEM
- BRACING
- PLASTER / STUCCO
- POOL KITS
- WINDOWS, CABINETRY & MORE

We are now a



PROFORM FOOTING FORMS  
& ACCESSORIES

ICFSPECIALTIES.COM  
INFO@ICFSPECIALTIES.COM  
**509-599-7218**

SERVING THE INLAND NORTHWEST FOR OVER 20 YEARS!





## **HAPPY ROOF, HAPPY HOME!**

*Serving the Tri-Cities Area,  
Eastern Washington & Northern Idaho!*

- Residential & Commercial
- New Construction Installations
- Repairs
- Maintenance
- Replacements
- Shingle, Tile, or Flat Roofs
- Siding
- Skylights
- Storm Damage Repair
- Roof Inspections **& More!**



Call Today to Schedule Your Appointment!

**509-987-7818 or visit [www.AlpineRoofingPro.com](http://www.AlpineRoofingPro.com)**

License #: ALLPIR784K3

**FREE TO PLAY**

# **9-Hole Mini Golf**

**PUTT YOUR WAY TO PRIZES!**

Try your luck at our mini golf challenge!

With 9 holes comes 9 chances to win! Get a hole-in-one on our mini golf course and be entered in for your chance to win that hole's prize! Learn more at [spokanehomeshows.com](http://spokanehomeshows.com)

**SEE ALL PRIZES**



**MARCH 7-9**  
**SPOKANE CONVENTION CENTER**



# **WE BUILD TRUST... ONE BUILDING AT A TIME**

Serving the Inland Northwest Since 1992



Check Out These  
**BARNDOMINIUMS**

## **POLE BUILDINGS • SHOPS • GARAGES**

HANGARS • STUD FRAME • HAY COVERS • HORSE ARENAS • HORSE BARN  
BARNDOMINIUMS • MINI STORAGES • WAREHOUSES • CUSTOM DESIGNS • SITE PREP



*"Highest Referral Base in the Industry Since 1992"*



## **Quality Steel Buildings, Inc.**

GENERAL CONTRACTORS

[www.QSBINC.com](http://www.QSBINC.com)

SPOKANE  
**(509) 468-1606**

TOLL FREE  
**(800) 775-0125**

NEWPORT  
**(509) 447-5866**

**WANT TO BUILD YOUR OWN SHOP?**  
Ask About Our **BUILDING KITS** in ALL sizes!

ID LIC# RCE-991 | WA LIC# QUALISB081C7

# ROOFERS YOU CAN TRUST

## COMMERCIAL & RESIDENTIAL ROOFING

At Apex Roofing, TRUST is the cornerstone of our service. Your home deserves the best, and we're here to deliver.

### SERVICES

Residential / Commercial Roofing  
Storm Damage • Asphalt Shingles  
Gutter Installations

**FREE ESTIMATES!**

[www.APEX-ROOFING.com](http://www.APEX-ROOFING.com)

**509-319-0048**

15407 E. Mission Ave., Suite 203  
Spokane Valley

APEXRL776CB • ID Lic: RCE-51037 **APEX ROOFING**



## Spring Outdoor Cleaning Checklist

### Deck & Patio:

- Sweep away leaves and debris
- Scrub with appropriate cleaner (wood, composite, or concrete)
- Remove stains with vinegar or baking soda
- Seal or stain if needed

### Windows & Screens:

- Wash glass with vinegar & water solution
- Wipe with microfiber cloth or squeegee for streak-free shine
- Rinse and scrub screens with mild soap & water
- Clean window tracks and frames

### Siding & Exterior Walls:

- Scrub with mild detergent or vinegar-water mix
- Use a pressure washer (low setting for wood, higher for brick/concrete)
- Remove mold or mildew with bleach-water mix

### Outdoor Furniture:

- Wipe plastic & metal furniture with warm soapy water



## Pest Control

## Rodent control

## Wildlife Exclusions

## Mole/ Vole Control

***Mention This Ad &  
Receive 10% Off Any  
Service!***

[www.CritterControl.com](http://www.CritterControl.com)

## PEST CONTROL SPECIALISTS

**Call For Your  
Free Inspection**

**509-443-6757**





- Clean wood furniture and reseal if needed
- Wash outdoor cushions with detergent & vinegar, then air dry

#### Walkways & Driveways:

- Sweep away dirt and debris
- Use vinegar or pressure wash for deep cleaning
- Remove oil stains with baking soda & dish soap

#### Gutters & Roof:

- Clear out leaves and debris
- Flush gutters with a garden hose to check for clogs
- Inspect the roof for missing or damaged shingles

#### Fire Pit & Grill:

- Remove ash and debris from fire pit
- Scrub grates and surfaces with soapy water
- Check propane lines for leaks and clean grease trays

#### Yard & Garden:

- Rake leaves and trim overgrown shrubs
- Aerate the lawn and reseed bare patches
- Apply fertilizer and lay fresh mulch



Attend our FREE informative seminars to earn chances to WIN a pre-built 8'x8' Greenhouse from Ziggy's Home Improvement!

For each one of the 14 seminars you attend, you'll get an extra entry to win this Greenhouse!



**MARCH 7-9**  
SPOKANE CONVENTION CENTER

**SCAN TO  
LEARN MORE**

STUNNING, EASY TO INSTALL

# RAILING

Find the *Perfect Railing System* that Complements Your Deck and Enhances Your *Outdoor Oasis!*

## TYPES OF RAILING OFFERED

### *Framed Glass Railing:*

Framed glass railing is precisely tailored to the customer's requirements.

### *Frameless Glass Railing:*

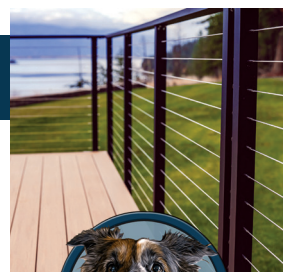
With a resistance to extreme weather conditions and wear and tear.

### *Cable Railing:*

Cable railing is a contemporary, versatile, and safe choice for both residential and commercial spaces.

## WHY INSTALL MAISY RAILING?

- *Sleek & Modern Look*
- *Uninterrupted View*
- *Durable & Safe*
- *Easy Installation*



**MAISYRAILING.COM**  
**509-998-6522**

3319 C St NE, Auburn, WA  
3390 Hayden Ave, Hayden, ID  
3700 Coburg Rd, Eugene, OR





## EVERYTHING YOU NEED TO BUILD YOUR DREAM HOME

### SIDING

#### James Hardie® Siding

- #1 Brand in North America\*
- Hardie® Fiber Cement Products Will Not Burn
- Backed by a 30-year Non-Prorated Limited Warranty

#### LP Smart Siding

- The LP® SmartSide® Limited Warranty Beats Competitors by 20 Years!

### ROOFING

#### Pabco Premier Roofing

- Premium Laminated Architectural Shingle Offering
- UL790 Class A Fire Resistance
- Ten Colors
- Algae Defener® Protection
- Limited Lifetime warranty

### DECKING

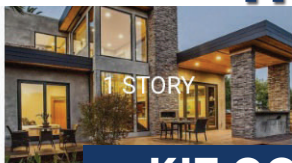
#### Trex Decking

- High-Performance Composite Deck Boards
- Engineered to Resist Fading, Scratches & Stains
- Eliminate Time-Consuming Maintenance

### WINDOWS & DOORS

**Cascade, ThermaTru,  
Plygem, Rogue Valley**

## HOME PLANS AVAILABLE



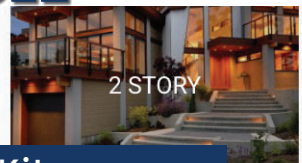
1 STORY



1.5 STORY



2 BEDROOM



2 STORY

**KIT COLLECTIONS | [www.ThePoleBarnKits.com](http://www.ThePoleBarnKits.com)**

**We Design, Engineer, and Supply POLE BARNs • GARAGES • ADU KITS**



#### VISIT OUR 3 LOCATIONS!

**NOW IN  
AIRWAY HEIGHTS!**

**COLVILLE:**  
228 W. 5th Ave  
Collville, WA

**KETTLE FALLS:**  
170 W. 3rd Ave  
Kettle Falls, WA

**AIRWAY HIEGHTS:**  
1155 S. Lyons Rd  
Airway Heights, WA

**509-798-8545 • [www.ThePoleBarnKits.com](http://www.ThePoleBarnKits.com)**





**\$1500 OFF**  
*complete bathroom  
remodel*

More safety. *More style.*

*Contact us today for a free in-home design consultation.*



**509.213.0996 | [REBATH.COM](https://rebath.com)**

**PROUDLY SERVING  
SPOKANE | COEUR D'ALENE**

*WA: REBATS\*812BN, ID: RCE-50115*

*Discount applies to full bathroom remodels. Valid until 3/31/25. Other restrictions may apply.*

The Genuine. The Original.



10

— Since 1913 —



GARAGE DOOR EXP



00  
YEARS

Since 1921 —

Overhead Door Company of Spokane - Coeur d'Alene™

Contact us for Sales & Service: **208-773-0502**

OverheadDoorInc.com



**EXPERTS SINCE 1921**



# Enter to win Great Door Prizes

March 7 - 9 | Convention Center



**Stop by these Booths and Enter to Win some GREAT Prizes!**

**Attend ANY Seminar & Earn an Entry  
to WIN a Greenhouse from Ziggy's**

(#269-271 & 276-278)

## **Blackstone Grill**

*Kustom US Restoration  
#25-26*

## **3 Hour Cleaning Service**

*A Consistent Cleaning Experience  
#132*

## **Brinkley Travel Trailer**

*Bretz RV & Marina  
#60-63, 84-87*

## **Gift Basket w/ Goodies & \$100 Home Depot Gift Card**

*Restoration 1 of Spokane  
#69*

## **Milwaukee Heated Jacket**

*Restoration 1 of Spokane  
#69*

## **Samsung Washer Dryer Set**

*Builders Supply & Home Center  
#88-89 & 114-115*

## **Whole Property Inspection & Pest Testament**

*Critter Control, #130*

## **Spring Gift Basket**

*the Exchange, #45*





24 x 32 x 10

**\$3,000 DISCOUNT**

| Garage Hobby Shop |



30 x 60 x 12

**\$4,000 DISCOUNT**

| Storage Building |



30 x 40 x 10

**\$3,750 DISCOUNT**

| Garage Hobby Shop |



40 x 60 x 12

**\$6,000 DISCOUNT**

| Garage Hobby Shop |



30 x 36 x 10

**\$4,500 DISCOUNT**

| Horse Barn |



30 x 48 x 16

**\$5,000 DISCOUNT**

| RV Storage |

- PRICES MAY VARY DUE TO LOCATIONS
- SPECIALS OFFERED FOR A LIMITED TIME ONLY

### AG SPECIALS



50 x 80 x 16

**\$5,000 DISCOUNT**

70 x 120 x 16

**\$7,500 DISCOUNT**

60 x 100 x 16

**\$7,500 DISCOUNT**

80 x 152 x 16

**\$13,000 DISCOUNT**



**5%  
OFF**

USING THIS QR  
CODE AT THE  
SHOW!



Specializing in Post Frame Buildings

JOIN US at the SPOKANE Home  
& Garden Show  
MARCH 07 - 9, 2025  
SPOKANE CONVENTION CENTER

REACH US BY EMAIL

[info@mqsbar.com](mailto:info@mqsbar.com)



FOLLOW US



@mqsinc



@mqsbarns



**CALL US : 855-677-2276**

**VISIT US: [www.MQSBARN.com](http://www.MQSBARN.com)**

# Make it a Date Night!



Sponsored by  
the *Exchange*



## BARRELS & BREWS

**4PM-8PM FRIDAY, MARCH 7**

Spokane Convention Center | 334 W. Spokane Falls Blvd

**Sample Wine & Beer while shopping for your home**

Participate in this fun event & be eligible to win a \$100 Home Improvement Gift Card & a Basket of Local Beer & Wine. Just get stickers from four specified booths (Ziggy's Home Improvement, ICF Specialities, Overhead Door Company, the Lee Arnold Team) & turn in your ballot/ticket at the Exchange booth. **Good Luck!**

## Crafty Creations

Handmade, Custom Engraved Wood Art

- Key Hangers
- Door Signs
- Wall Art
- Christmas Countdowns
- Earrings & Hair Clips
- Coasters
- Car Charms & Fresheners
- Ornaments
- Nursery & Kids Room Hooks
- Baby Milestones
- Tic Tac Toe



Chat with Us at the Home  
& Garden Show about

**CUSTOM ORDERS**

Desiree Dunham  
CraftyCreations.349@gmail.com

DIY  
Kits Too!

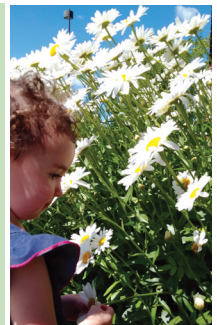
Garden  
Landscape

**SPRING**  
is in the **AIR**



*Certified Spokanescape Pro*

- \* Garden Clean Up
- \* Weeding
- \* Rose & Flower Care
- \* Planting
- \* Specialty Landscapes including Water Wise, Pollinator & Fire Wise
- \* Professional Consultations Get Your Gardening Questions Answered by a Pro Gardener!



Call Today for a Consultation!

**509-768-5442**

GardenUpLandscape.com

YouTube Check out our YouTube Channel!

Get Your Milkweed Seeds for Monarchs!

www.Etsy.com/shop/GardenUpSeedShop







# Enhance Your Landscape



## Composite Landscape Bridge



### *Our Beautiful Bridge will Make Your Garden an Earthly Delight*

- Composite Materials
- Zinc Plated Fasteners
- Resistance to Rot & Decay
- Multiple Lengths: 8', 10', 12', 14', 16'
- DIY Kit Available, *includes just the base frame, shipped to your door*
- Additional Features can be added

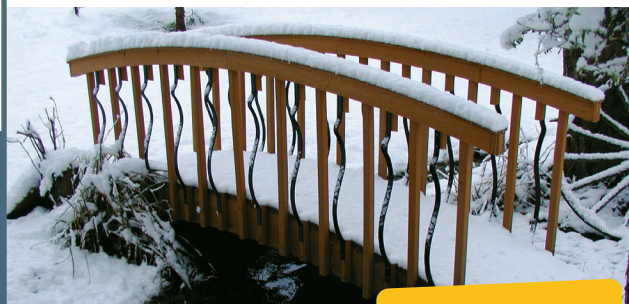
***Don't be Fooled by Look-alikes;***  
our bridge superstructure is patented  
and has been tested with over 2,000  
pounds (1 ton) of static load.



## 24" Landscape Waterwheel



- State-of-the-Art Water Pump
- Aerates Water for Fish Health
- All Stainless Steel Metal Materials for Extended Life
- Simply Set & Plug in
- Enjoy Soothing Sounds of the Cascading Waterfall
- Need a Pond? Ask us about Quick Install Above Ground Pond



**JAB DYNAMICS | 509-844-8891**  
303 N. Brockway Rd, Rosalia

**CALL FOR  
SPRING  
SCHEDULING!**

# Why Do I Need A Professional Contractor?

Using a professional contractor for various projects, especially those involving construction or renovation, offers several advantages:



**Expertise and Experience:** Professional contractors have the necessary expertise and experience to handle a wide range of projects. They understand the intricacies of construction, renovation, and remodeling, ensuring that the work is done correctly and efficiently.

**Compliance with Regulations:** Building codes, permits, and regulations can be complex and vary

depending on location. Professional contractors are well-versed in these regulations and ensure that all work is compliant, reducing the risk of fines or penalties.

**Project Management:** Contractors manage all aspects of the project, including scheduling, procurement of materials, coordination of subcontractors, and overseeing the work. This saves time and alleviates the burden of project management from the homeowner.

**Access to Resources:** Professional contractors have access to a network of suppliers, subcontractors, and other resources that can streamline the project and potentially save costs. They can negotiate better deals on materials and services, passing on the savings to the homeowner.

**Insurance and Liability Coverage:** Reputable contractors carry insurance coverage, including liability insurance and workers' compensation, which protects both the homeowner and workers in case of accidents or damages during the project.

**Time and Cost Efficiency:** While DIY projects may seem cost-effective initially, they can often end up being more expensive and time-consuming due to mistakes, rework, and the need to purchase or rent specialized tools. Professional contractors work efficiently, minimizing delays and ensuring that the project stays within budget.

**Increased Property Value:** High-quality workmanship and professional renovations can significantly increase the value of a property. Hiring a professional contractor ensures that the investment adds value to the home and enhances its appeal to potential buyers in the future.

## ***EJ BUILDERS LLC***



### **INSULATING CONCRETE FORM CONSTRUCTION EXPERTS**

**DURABLE + ENERGY EFFICIENT**  
**HIGH THERMAL MASS**  
**DISASTER RESISTANT**  
**FIRE RESISTANT FOR UP TO 4 HOURS**

**CALL EJ BUILDERS, LLC NOW!**  
LEARN ABOUT HOW INSULATING CONCRETE FORM CONSTRUCTION IS RIGHT FOR YOU!  
**509-599-7218**  
**EJ-BUILDERS.COM**





THINKING OF

**30% Tax Credit**

ON SOLAR PURCHASES!

FREE CONSULTATION  
for Ground or Rooftop Solar

ASK ABOUT USDA GRANT

**0 Down Financing**

& NO SALES TAX



**PACWESTSOLAR**

509-856-5026  
pacwestsolar.com

PACWESL783DP

# Solar?

*Reduce or Eliminate  
Your Electric Bill!*



*We Make Solar*

# Simple



BUY • LIST  
SELL QUICK  
THE LEE ARNOLD TEAM

**kw** SPOKANE  
KELLERWILLIAMS.

**Come see us at the Spokane  
Home & Garden Show  
at Booth #106**

**We are giving away an iPad!**

## TURN HOUSES INTO OPPORTUNITIES

*Learn to Invest in Real Estate*

**Seminar: Saturday, March 8th - 1pm**

**Show Dates: March 7-9**

**Location: Spokane Convention Center  
334 W Spokane Falls Blvd**

Call or Text

**888-645-7004**

**TheLeeArnoldTeam.com**





# TRANSFORM Your Oasis



## Concrete Driveways & Patios • Landscape Installation

### STAMPED CONCRETE

#### Driveways, Patios & Edging

- Durable - Last up to 30 years
- Affordable
- High Quality Materials
- Customizable Patterns
- Variety of Colors & Textures

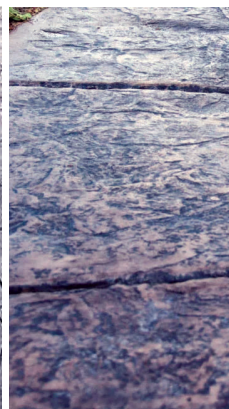
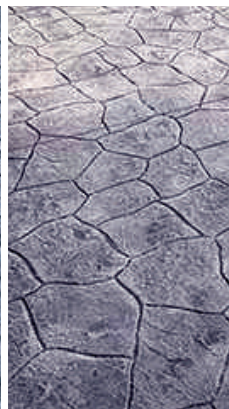
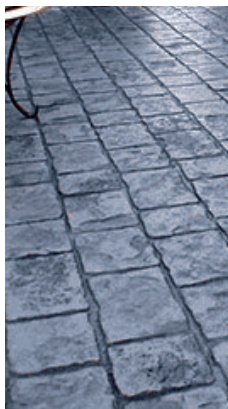
### SANDWASH FINISH

#### Lightly Sanded Surface to add Depth & Character to Pools, Walkways, Decks & Driveways

- Most Cost Effective Option
- Minimal Maintenance
- Versatile

### CONCRETE EDGING

- Square, Sloped
- Customizable
- Standard Profiles
- Variety of Colors & Textures
- Continuous







Installation

## CONCRETE EDGING

are, Slant & Tapered  
tomizable Patterns  
ndard Patterns  
ety of Colors  
extures  
tinuous Boarder



## Lawn Maintenance & Spray Services

**Our Team is Dedicated to  
Top-Knotch Lawn Care**

- Weed Control
- Noxious Weed Control
- Fertilization
- Irrigation
- Aeration
- Grub Control
- Soil Sterilization
- Area Mowing
- Pest Control

**We Offer Customizable  
Lawn Treatment Options**

- Spray Solutions
- Regular Fertilizations
- Herbicides

**\*Ask About: Spokane Spruce Spray**  
An overall essential service for  
maintaining a healthy lawn

**Over 18 Years of Service!**



**CONCRETE & LANDSCAPING**

**[www.DUNDEEDIG.com](http://www.DUNDEEDIG.com)**



**SHOW  
SPECIALS!**

**LAWN & SPRAY  
SERVICE:**

Free Pest Control when  
you sign up for 5 Step  
Fertilizer & Insecticide  
Program

**CONCRETE LAWN  
EDGING:**

\$100 OFF any Curb Job  
over 250 ft



**Visit Us at Booth #055  
for a 10% off coupon!**

**Residential &  
Commercial  
Painting**

**Demolition  
& Renovation**

**Deck Staining  
& Much More!**

**Eco-Friendly  
Options!**

**Now offering financing through Wisetack  
0% interest options available (on approved credit)**

**PavilionPainting.com | (509) 847-5179  
1224 W Northwest Boulevard, Spokane**

## Best Gardening & Landscaping Tasks in Early Spring:

In Eastern Washington, early spring is a great time to start your gardening and landscaping chores. Since we get cold winters and a relatively dry climate, taking advantage of warming soil and increasing daylight is crucial. Here are some things to consider:

### 1. Transplanting & Planting

- Deciduous trees & shrubs – Before they leaf out.
- Evergreens – Early spring is a good time before summer heat sets in.
- Perennials – Divide and replant crowded perennials like daylilies, hostas, and ornamental grasses.
- Cool-season vegetables – Plant spinach, lettuce, peas, onions, carrots, and radishes.
- Bare-root plants – Best time to plant fruit trees, roses, and berry bushes.

*continued on page 32*



## Medicare Insurance Review and Consultation at No Cost!

Also, We are looking for  
ethical agents to join our  
team.

Visit our Booth, #210, at the Home Show! We  
will be there to answer your questions. We look  
forward to seeing you!

*We Know Medicare is a non-government entity. We do not offer every plan available in your area. Currently, we represent 16 organizations which offer a total of 275 products. Please contact Medicare.gov or 1(800) MEDICARE for all your options.*

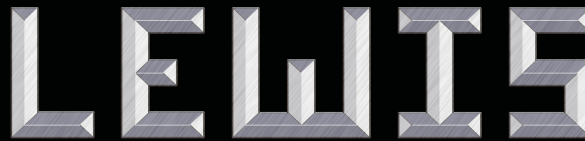
**WE KNOW  
medicare®**

**(877) 346 2060**  
**WeKnowMedicare.org**



**SPOKANE OFFICE:**

8225 N Division  
Suite A  
Spokane, WA 99208  
(509) 998-2304  
WA: LEWISCD917BN



CONSTRUCTION & DEVELOPMENT, INC.  
[www.LewisConstructionInc.com](http://www.LewisConstructionInc.com)

**IDAHO OFFICE:**

54 Beach Drive  
Outlet Bay  
Priest Lake, ID 83856  
(208) 217-2756  
ID: RCE-40228



## SERVING EASTERN WASHINGTON & NORTHERN IDAHO

### WATERFRONT EXPERTISE

We are your partner for navigating the many challenges of building on waterfront.

### SITE DEVELOPMENT & ACREAGE PROPERTIES

We get your site "ready for construction" by providing your Building Pad, Road, Power, Gas, Water/Well, Sewer/Septic, etc. We also create parcels and subdivisions.

### AWARD WINNING HOME DESIGN

Many Award Winning "Stock Plans" to choose from...OR

We use or modify your plans and "tweak them to perfection"...OR

Allow us to CUSTOM DESIGN YOUR HOME exactly to your specifications!

### "FOREVER HOMES" & VETERAN ADAPTIVE HOUSING

Most of the homes we create are designed as "forever homes."

We also create designs that qualify for the VA Specially Adapted Housing (SAH) Grant.

### QUALITY CONSTRUCTION MANAGEMENT

Whether we build from your plan or one we design for you; every step in our process is designed to deliver Superior Quality Construction Management.

### OPEN COMMUNICATION

You will have your own personal web page and mobile app to track all communication, decision making, budget and scheduled progress.

### GUIDED DECISION MAKING

We guide you through making all the decisions necessary to ensure you are "in step" with your builder and budget.

### THE BEST TEAM = THE BEST RESULTS

Every successful endeavor starts with creating the best team. Our team has over 100 years of combined experience AND the systems to ensure we deliver high quality results. We'd be honored to lead your team in the Construction of Your Dream!

**Contact us online at [www.LewisConstructionInc.com](http://www.LewisConstructionInc.com)**

## Residential • Commercial • Industrial

**Low Maintenance • Durable & Long Lasting  
Many Colors & Design Options**



**Concrete & Asphalt  
Repair**



**Shower Kits**



**Concrete Overlay  
Countertops**



**Epoxy Countertops**



**Flake Floors**



**Epoxy Floors**



**Textured  
Decking**



**Hardwood Overlay**



**A Certified  
Installer For**



**Leggari Products**

**By FTF Services**

**Request a Quote or Schedule a Job with Us!**  
**509-720-4909 • ConceptsonConcrete.com**

**WE WILL BEAT ANY WRITTEN ESTIMATE!**

*on all Shops & Barndominiums*



**STRONGEST BUILDINGS IN THE NORTHWEST!**

**SOLID STRUCTURES**

### Permanent Post Systems

- Our Patented Bracketed System ensures that **No Wood Gets Placed in the Ground** in the first place
- Non-Toxic with an Exceptional Quality & Warranty



**www.SolidStructuresNW.com**

**SHOPS, BARNDOMINIUMS, BOAT/RV STORAGE, GARAGES,  
HAY COVERS, RIDING ARENAS, MINI-STORAGE, & MORE!**

**LOCAL CREWS! FREE ESTIMATES!**

*Custom Designs  
Are Our Speciality!*

**1-855-SHOPSNW**

WA #SOLIDSL890JN ID #RCE-30127

*continued from page 30*

## 2. Soil Preparation & Mulching

- Amend soil – Add compost, manure, or other organic matter to improve the quality of soil.
- Mulch around trees & shrubs – Helps retain moisture and suppress weeds.
- Test soil pH & nutrients – Ideal before heavy planting begins.



## 3. Lawn Care

- Dethatch & aerate – If your lawn has compacted soil, early spring is a great time.
- Overseeding bare patches – Grass seeds germinate well in cool weather.
- Fertilizing – Use a slow-release fertilizer to support new growth.

## 4. Pruning & Cleanup

- Cut back dead branches – On trees and shrubs before new growth.
- Prune summer-blooming shrubs – Like butterfly bush, potentilla, and hydrangeas.
- Remove winter mulch – From perennial beds once frost danger passes.



## 5. Pest & Weed Control

- Apply pre-emergent weed control – To prevent crabgrass and other weeds.
- Watch for pests – Aphids, mites, and early signs of disease.





# VISIT OUR GREENHOUSE

**SPRING IS JUST AROUND THE CORNER!**



**Plants, Local Seeds,  
Garden Supplies & MORE!**



**PAINT &  
SUPPLIES**



**CABINETS &  
COUNTERS**

**Field Stone, Kemper, Mantra & SKC**



**VISIT OUR 3 LOCATIONS!**

**NOW IN  
AIRWAY HEIGHTS!**

**COLVILLE:**  
228 W. 5th Ave  
Collville, WA

**KETTLE FALLS:**  
170 W. 3rd Ave  
Kettle Falls, WA

**AIRWAY HIEGHTS:**  
1155 S. Lyons Rd  
Airway Heights, WA

**509-798-8545 • [www.ThePoleBarnKits.com](http://www.ThePoleBarnKits.com)**

## Learn from the Best

Are you a plant lover or a green thumb enthusiast? Do you dream of having your very own greenhouse to grow your own fruits, vegetables, and flowers? Well, we have some exciting news for you!

Attend one or many of our great Seminars and learn about Gardening, Remodeling to Protecting your Home. And the best part? You'll have a chance to WIN your very own greenhouse from Ziggy's!

### FRIDAY – MARCH 7

**1pm: Key Issues When Taking on a Remodeling Project.**

Panel: Justin Reed, Greater American Construction, Rob Wright, Wright Brothers Sunrooms and B.J. Eyth, Outdoor Cedar Structures.

**2pm: Your Graden and Climate Change.**

Kathryn Alexander MA, Soil Smart – Soil Wise  
Learn what can you do – on your own property, to help cool the planet. Five things that are inexpensive and impactful.

**3pm: Nurture Your Nature: A Summary of Dr. Douglass Tallamy's books & studies.**

Amy Dutton, Garden Up Landscape  
How to support nature in your backyard.

**4pm: Hard Surfaces the Trend.**

Jamie Johnson, Inland Interior Design

**6pm: Protecting Your Investment: The Importance of Homeowners Insurance.**

John Beasley, Beasley State Farm

### SATURDAY – MARCH 8

**11am Beautiful Landscapes with Less Time and Less Money.**

Kathryn Alexander MA, Soil Smart – Soil Wise  
Working with nature can save you effort and save you money while improving biodiversity and making your place look good – all at the same time.

**1pm Turn Houses into Opportunities, Learn to Invest in Real Estate.**

Michelle Eyraud Mendez, The Lee Arnold Team

**2pm Children's Introductory Karate Class.**

Jared Grile, Warhorse Karate Jiu Jitsu

**3pm Hard Surfaces the Trend.**

Jamie Johnson, Inland Interior Design

**4pm Sheds; Accents and Accidents.**

Joe Gish, The Shed Center

Adding personality to your shed and making it an accent piece to your landscape instead of an eye sore.

**5pm Designing Market Gardens.**

Courage to Grow

### SUNDAY – MARCH 9

**11am Making Your Garden Part of the Ecology.**

Kathryn Alexander MA, Soil Smart – Soil Wise  
Birds and bugs are part of what we love and hate in nature. How can your garden become a natural resource for the more than human life that makes our life possible?

**1pm Designing for All the Things: Gardening for Food, Pollinators, Birds, Water Conservation, Fire Resistance AND Societal Expectations/ Aesthetics all at once.**

Amy Dutton, Garden Up Landscape

**2pm Children's Introductory Karate Class.**

Jared Grile, Warhorse Karate Jiu Jitsu

Bring your child in for an introductory to Karate.



LIC #NWHEAHC92609  
**CALL 509-590-3941 OR 509-244-6010**

## NW Heating And Cooling Inc.

Gas/ Electric Furnaces • Shop/Garage Heaters  
Air Conditioners • Heat Pumps • Venting  
Indoor Air Quality • Gas Piping  
Ducting/Sheet Metal • Ductless Mini Splits

**NW.HC@HOTMAIL.COM • WWW.MYNWHC.COM**



## Bringing YOUR IDEAS to Life

Flooring • Kitchen • Bathroom  
Cabinets • Furniture

*From Bathrooms to Your Whole Home, We Can Do it All!*

**509-474-1492 • InlandInteriorsRemodeling.WpcomStaging.com**



**INLAND**  
— INTERIORS AND DESIGN —



# Tree Specialists & Landscape Construction & Design



*Clean, Green & Growing*

Tree Removal  
Stump Grinding  
Tree & Shrub Care  
Emergency/Crane Service  
Planting & Mulching  
Hardscape Design  
Paver Patios  
Retaining Walls  
Sprinkler Systems



**TREE & LANDSCAPE, LLC**

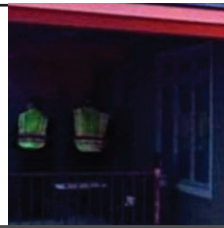
*Call Us!*

**509.467.3801**

[www.samscares.net](http://www.samscares.net)



Serving Eastern Washington & Northern Idaho Since 2001 CL # SAMSTTS857BG Licensed, Bonded, and Insured



## OUR SERVICES:



**24/7 Emergency Response**



**Water Damage Restoration**



**Fire Damage Restoration**



**Storm Damage Restoration**



**Mold Remediation**



**Contents**



**Carpet Cleaning**



**Board-Up, Fencing & Tarping**

**24/7 Emergency  
Response Hotline  
509.547.7970**

## PROUDLY SERVING CENTRAL & EASTERN WASHINGTON



### ***Client Testimonial***

"I couldn't be happier with this company. I was frantic after my living room was flooded. They got there fast and started working...The work they did turned out great. I highly recommend them if you have an emergency."

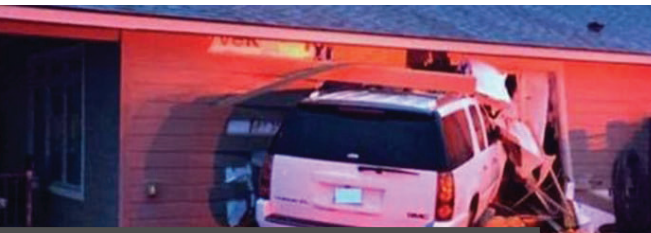
- Leah C.

### ***Commerical & Residential***

From Restoring the comfort of your home to supporting the needs of local businesses, Kustom Us Restoration is here for your every step of the way.

***We Bring Strength to  
Every Disaster Situation***





## Why Kustom US Restoration?

### **Quick Response Time**

We understand the urgency of restoration needs and respond within 30 minutes to 1 hour to minimize downtime and damage.

### **Full Restoration/Repair Services**

Experts in restoration and repair for water, fire, mold, smoke, and biohazard/trauma damage. From emergency response to full remediation and reconstruction, we handle every step to restore your property with care and precision.

### **Experienced Professionals**

Our IICRC-certified technicians are trained and equipped to expertly handle water damage, mold remediation, and sanitation restoration, bringing your home back to its pre-loss condition with reliable, efficient solutions.

### **Insurance Assistance**

We work with insurance companies to help guide you through the claims process



**509.547.7970**  
**kustom.us/pasco**

**Scan to  
Follow  
Us**



# EXHIBITOR LINE-UP

## MAKE YOUR DREAM HOME A REALITY!

2 Work Contracting..... 313	Crafty Creations ..... 177	<b>Homes By Gallion..... 100-103</b>
A Consistent Cleaning Experience ..... 132	Critter Control of Spokane.. 130	Hot Tub Warehouse/ Eco Spa ..... 261-263
Advanced Mechanical Systems ..... 44	Croc Coatings..... 165-166	HydroLawn ..... 23
Advocate ..... 362	Culligan..... 298	I Got Meat 20 Feet..... 82
Aerux Electrolux ..... 364	Custom Creations Landscape ..... 91	Ibex Metal ..... 308
All Floors..... 200-201	Cutco Cutlery..... 282	<b>ICF Specialties ..... 56-59</b>
Alpine Patio Concepts . 279-280	Daiwa Massage Chairs 108-109	Inland Interior & Design 151-152
Alpine Roofing ..... 234	Deck Pros Construction 190-191	Konstanty Interlocking Systems ..... 315-317
Amy Jo Carlson Insurance ... 99	DG Contracting..... 238	<b>Kustom US Restoration...25-26</b>
<b>Apex Roofing ..... 116</b>	Door Specialties, Inc..... 48	KW Energy Home Services 293
Asphalt Pros USA..... 273	Dow Excavating ..... 265	Lawn Doctor of Spokane ..... 78
Automatic Pool Covers . 367-369	DuctVac Northwest ..... 27	LeafFilter North..... 17
Bartlett Tree Experts..... 349	Dundee Concrete & Landscaping ..... 246	LeafGuard of Spokane ..... 302
Bath Fitter..... 224-226	Ecowater Systems of Spokane ..... 370	<b>The Lee Arnold Team ..... 106</b>
Beasley State Farm ..... 47	Eden Advanced Pest Technologies ..... 267	Lewis Construction & Development ..... 74-75
BJ Roofing ..... 250	Edward Jones ..... 281	Levit Painting ..... 179
BMW of Spokane..... 303-307	<b>Environment West Landscape Services..... 208</b>	Lexar Homes ..... 268
Boxcraft Cabinets ..... 156	Envision Outdoor Living /KI Construction ..... 288-289	The Licorice Guy ..... 376
BPS Supply Company . 258-259	Equilus Capital Partners .... 188	Little Moose Prints..... 189
Bretz RV & Marine..... 60-63 & 84-87	Evergreen Softub..... 144-145	M & E Sales..... 274-275 & 300
The Brothers That Just Do Gutters ..... 146	The Exchange ..... 45	MACC Insurance ..... 99
Browning Beef ..... 199	Fairmount Memorial..... 319	Maisy Railings ..... 49
Bruttles Gourmet Candies .. 363	Fairway Independent Mortgage..... 209	McVay Brothers Siding & Windows ..... 65-66
Bugle Northwest ..... 34-35	First Onsite ..... 241	The Moss Boss..... 41
<b>Builders Supply . 88-89 &amp; 114-115</b>	Five Star Painting of Spokane.. 366	MQS Inc..... 28-29
Building Partners Northwest 150	Floor Coverings International Spokane ..... 71-73	Naturescape Northwest..... 333 & 359-360
Built By Ernie ..... 159-160	Fusion Boutique..... 252-253	Nectar of the Vine..... 256
Bulldog Rooter..... 371-372	Garden Up Landscape ..... 312	New Heights Roofing..... 211
Cabinet Pro & Floors ..... 42-43	Gazebo Guys..... 320	N-Hance Wood Renewal ..... 95
Cabinets Plus ..... 173-174	Glacier Roofing & Exteriors ..... 80-81	Northwest Ductless Heating & Cooling ..... 158
Canopy Credit Union ..... 141	Grand Destination Vacations ..... Entrance	Northwest Health and Safety Network..... 331
Casa Vida Painting ..... 133	Great Floors..... 198	Northwest Heating & Cooling ..... 177
Cellular Sales of Washington ..... 127	Greater American Construction ..... 170	Off Leash K9 Training..... 219
CertaPro Painters ..... 222	<b>Green Pro Landscaping &amp; Supply ... Centerpiece</b>	<b>Overhead Door Company of Spokane - Cd'A..... 374-375</b>
Chattaroy Cabinet Company..... 247-248	H2O Solutions ... 39-40 & 51-52	PacWest Solar..... 332
Clearwater Springs ..... 131	The Hayden Furniture Depot ..... 125-126	Palms Tree Service & Landscaping ..... 93
Cleary Building Corp..... 118	Holiday Heating, Cooling & Electric..... 36-37	Palouse Fiber Packaging... 239
College H.U.N.K.S. Hauling Junk ..... 284		Pavilion Painting ..... 55
Concepts On Concrete by FTF Services..... 221		Perrenoud Roofing ..... 46
Concrete Craft of Spokane & CDA..... 295		Peterson Property Group.... 227
Country Homes Power.... 192-196 & 202-206		PNW Lawn Care..... 315-317
Courage to Grow ..... 294		PNW Post Frame..... 70



Polar Clean Air.....	67	Robinson Confections .....	249	Straightline Construction	
Pool Cover Doctor .....	18	Sam's Lawn		& Granite.....	245
Preble Painting .....	162-163	& Tree Landscaping .....	242	Sunstone Solar.....	161
Premier Building		Sauna Health Store .....	361	Superior Sleep	
Systems .....	290-291	Scentsy.....	297	Experience. 120-121 & 138-139	
PS Products.....	218	<b>Screen Solutions NW ....</b>	<b>15-16</b>	TDS Fiber .....	236-237
Purelight Power .....	187	Set in Stone.....	104-105	T-Mobile.....	112
R & R Heating		The Shed Center		Todd Sherwood Gallery.....	357-358
& Air Conditioning .....	310	in Mead .....	180 & Outside	TopLine Counters .....	110
R.C. Roofing Specilists.....	21	<b>Simplicity by Hayden Homes. 155</b>		Trimlight Eastern WA... ..	228-229
Raindrop Raingutters... ..	231-232	Site One Landscape Supply.....	32-33	Trugreen .....	373
<b>Re-Bath of Spokane .....</b>	<b>97-98</b>	Solid Fire Pits .....	347-348	UBuildIt .....	287
Redfern Inc.....	286	Solid Structures .....	147	USA Insulation.....	243
Regal Ideas .....	76-77	Sound Finish.....	117	Velocity Clinical Research ..	171
Renewal by		Source Code Essentials .....	154	Warhorse Karate Jiu Jitsu ..	142
Andersen.....	123-124 & 135-136	Specialty Home Products .....	334-335	We Know Medicare .....	210
Residential Home		Spokane Craftsman.....	54	Western States Seal Coat ..	257
Solutions .....	353-354	Spokane Neighborhood		Wright Brothers Sunrooms .	143
Restoration 1 of Spokane.....	69	Action Programs .....	365	Your Home Improvement Co... ..	19-20
Restoration Roofing/		Spokane Sunscreen ....	128-129	Zerorez of Spokane.....	207
Spokane Roof Maxx.....	299	SpokAnimal .....	351-352	<b>Ziggy's Home Improvement</b>	
RevoluSun Solar.....	346	Steel Structures America ....	153	.....	<b>269-271 &amp; 276-278</b>





# STEEL STRUCTURES AMERICA<sup>INC.</sup>

**PACIFIC NORTHWEST'S LARGEST  
POST FRAME CONTRACTOR**

POLE BUILDINGS / GARAGES / SHOPS / BARNES / COMMERCIAL

24/7 AVAILABILITY

**CUSTOM  
DESIGN  
IN-HOUSE  
ENGINEERING**

CALL US TODAY

**509.584.3452**



Scan to Visit  
Our Website

**ANY SIZE ★ ANY ROOFING ★ ANY SIDING OPTIONS**



**VISIT OUR SPOKANE LOCATION**

13520 E Nora Spokane Valley, WA 99216

**WWW.STEELSTRUCTURESAMERICA.COM**

**509.584.3452**